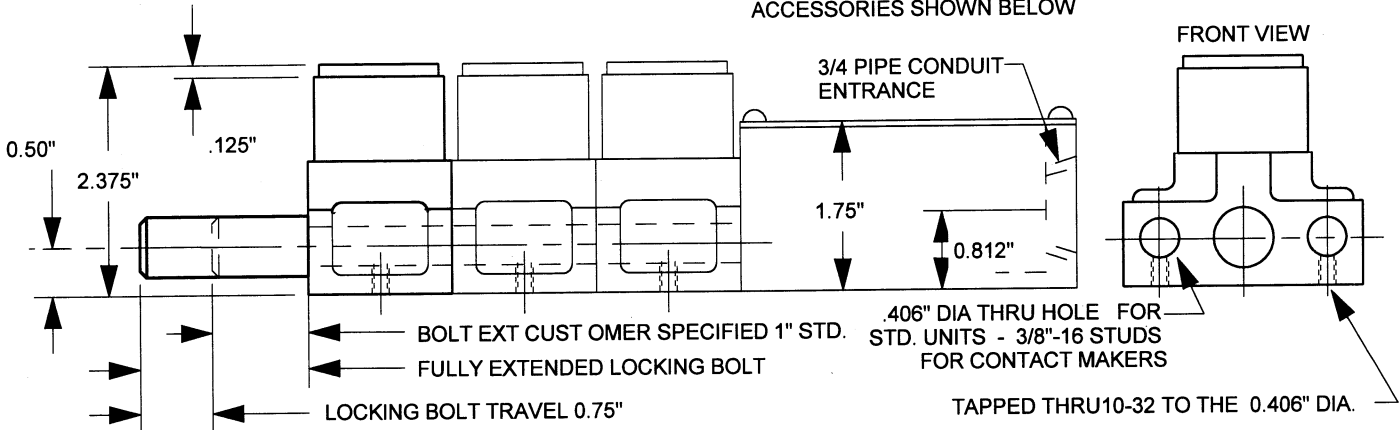


KEY RELEASED IN LOCKING BOLT EXTENDED POSITION, KEY TRAPPED IN LOCKING BOLT WITHDRAWN POSITION ON SINGLE KEY UNITS. MULTI KEY UNITS PLEASE SPECIFY ON DATA SHEET. PLEASE CALL FACTORY FOR DETAILS.

NOTE:  
ALSO AVAILABLE WITH TOGGLE SWITCH RATED AT 15A, 120VAC 3PDT, OR 4PDT IN MKII ENCLOSURE 2.25\"/>

PLEASE SEE ACCESSORY PAGE FOR DETAILS ON AVAILABLE ACCESSORIES SHOWN BELOW



### TYPE B-3003 KEY INTERLOCK TECHNICAL INFORMATION

UNIT DIAGRAM CAT#/TYPE DESCRIPTION SHIP WT.

UNIT DIAGRAM	CAT#/TYPE	DESCRIPTION	SHIP WT.
	S105800Y B-3003-1	ONE KEY UNIT	1 LB 8 OZ
	S105801Y B-3003-2	TWO KEY UNIT	3 LB 0 OZ
	S105802Y B-3003-3	THREE KEY UNIT	4 LB 8 OZ
	S105803Y B-3003-1C	ONE KEY UNIT WITH CONTACT MAKER	3 LB 2 OZ
	S105804Y B-3003-2C	TWO KEY UNIT WITH CONTACT MAKER	4 LB 10 OZ
	S105805Y B-3003-3C	THREE KEY UNIT WITH CONTACT MAKER	6 LB 2 OZ
	S105803YMKII B-3003-1CMKII	ONE KEY UNIT WITH TOGGLE SWITCH	5 LB 3 OZ
	S105804YMKII B-3003-2CMKII	TWO KEY UNIT WITH TOGGLE SWITCH	6 LB 11 OZ
	S105805YMKII B-3003-3CMKII	THREE KEY UNIT WITH TOGGLE SWITCH	8 LB 3 OZ

GENERAL SPECIFICATIONS:

STANDARD UNIT  
HOUSING: CAST BRONZE  
LOCKING BOLT: SILICONE BRONZE CDA642  
INTERNAL PARTS: BRASS, & STAINLESS STEEL  
FINISH: NATURAL

STAINLESS STEEL UNIT  
HOUSING: CAST 316 STAINLESS STEEL  
LOCKING BOLT: STAINLESS STEEL  
INTERNAL PARTS: BRASS-NICKEL PLATED, & S.S.  
DUST COVER: STAINLESS STEEL  
FINISH: NATURAL

CONTACT MAKER ENCLOSURE  
HOUSING: CAST BRONZE

MULTI-KEY UNITS WITH 4, 5, & 6 KEYS AVAILABLE  
ADDITIONAL OPTIONS & ACCESSORIES AVAILABLE  
PLEASE CALL FACTORY FOR PART NUMBERS,  
DETAILS AND PRICING

### AVAILABLE ACCESSORIES

KC		LBM		LBD		ACYL		TPIN		SW3		MB4		HN		DC1M		DUAL	
RH		LBDT		LBDT		SSLB		TBAR		SW4		MB4S				DC1		DC2	