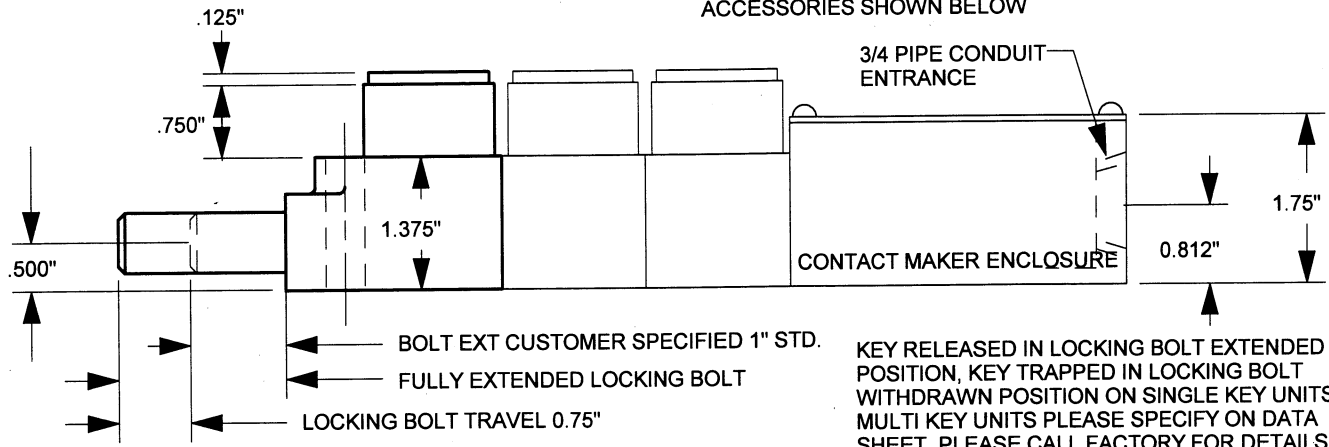


NOTE:
 ALSO AVAILABLE WITH TOGGLE SWITCH RATED AT 15A, 120VAC 3PDT, OR 4PDT IN MKII ENCLOSURE 2.25" W X 3" H X 4.937" L.

PLEASE SEE ACCESSORY PAGE FOR DETAILS ON AVAILABLE ACCESSORIES SHOWN BELOW



KEY RELEASED IN LOCKING BOLT EXTENDED POSITION, KEY TRAPPED IN LOCKING BOLT WITHDRAWN POSITION ON SINGLE KEY UNITS. MULTI KEY UNITS PLEASE SPECIFY ON DATA SHEET. PLEASE CALL FACTORY FOR DETAILS.

TYPE B-4003 FLAT MOUNTED KEY INTERLOCK TECHNICAL INFORMATION

UNIT DIAGRAM	CAT#/TYPE	DESCRIPTION	SHIP WT.
	S105810Y B-4003-1	ONE KEY UNIT	1 LB 12 OZ
	S105811Y B-4003-2	TWO KEY UNIT	3 LBS 0 OZ
	S105812Y B-4003-3	THREE KEY UNIT	4 LBS 4 OZ
	S105816Y B-4003-1C	ONE KEY UNIT WITH CONTACT MAKER	3 LBS 6 OZ
	S105817Y B-4003-2C	TWO KEY UNIT WITH CONTACT MAKER	4 LBS 10 OZ
	S105818Y B-4003-3C	THREE KEY UNIT WITH CONTACT MAKER	6 LBS 4 OZ
	S105816YMKII B-4003-1CMKII	ONE KEY UNIT WITH TOGGLE SWITCH	5 LBS 4 OZ
	S105817YMKII B-4003-2CMKII	TWO KEY UNIT WITH TOGGLE SWITCH	7 LBS 0 OZ
	S105818YMKII B-4003-3CMKII	THREE KEY UNIT WITH TOGGLE SWITCH	8 LBS 6 OZ

GENERAL SPECIFICATIONS:
 STANDARD UNIT
 HOUSING: CAST BRONZE
 LOCKING BOLT: SILICONE BRONZE CDA642
 INTERNAL PARTS: BRASS, & STAINLESS STEEL
 FINISH: NATURAL
 STAINLESS STEEL UNIT
 HOUSING: CAST 316 STAINLESS STEEL
 LOCKING BOLT: STAINLESS STEEL
 INTERNAL PARTS : BRASS- NICKEL PLATED, & S.S.
 DUST COVER: STAINLESS STEEL
 FINISH: NATURAL
 CONTACT MAKER ENCLOSURE
 HOUSING: CAST BRONZE
 MULTI-KEY UNITS WITH 4,5,& 6 KEYS AVAILABLE
 ADDITIONAL OPTIONS & ACCESSORIES AVAILABLE
 PLEASE CALL FACTORY FOR PART NUMBERS,
 DETAILS AND PRICING

AVAILABLE ACCESSORIES

