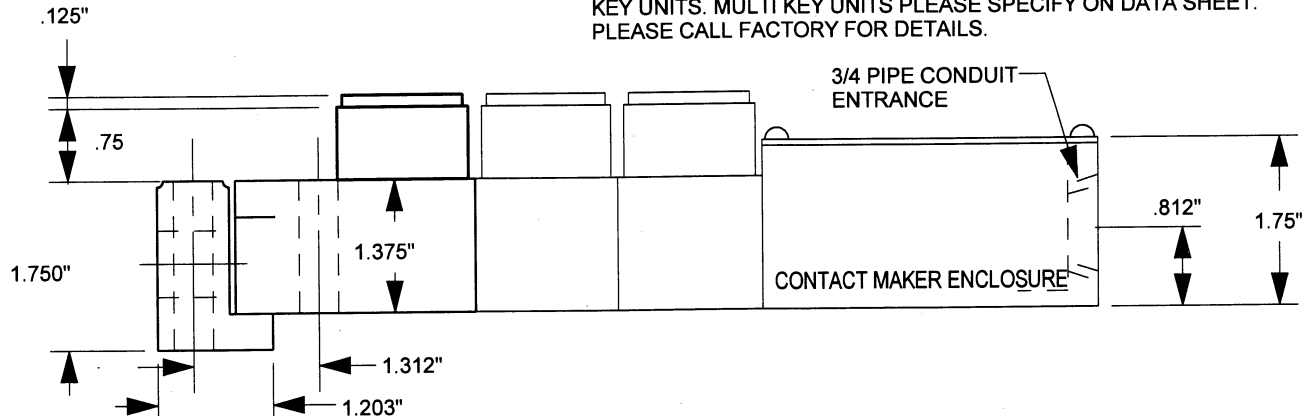


NOTE:  
 ALSO AVAILABLE WITH TOGGLE SWITCH RATED AT 15A, 120VAC 3PDT, OR 4PDT IN MKII ENCLOSURE 2.25" W X 3" H X 4.937" L. PLEASE SEE ACCESSORY PAGE FOR DETAILS ON AVAILABLE ACCESSORIES SHOWN BELOW

KEY RELEASED IN LOCKING BOLT EXTENDED POSITION, KEY TRAPPED IN LOCKING BOLT WITHDRAWN POSITION ON SINGLE KEY UNITS. MULTI KEY UNITS PLEASE SPECIFY ON DATA SHEET. PLEASE CALL FACTORY FOR DETAILS.



**TYPE B-5003 ACCESS INTERLOCK TECHNICAL INFORMATION**

UNIT DIAGRAM	CAT#/TYPE	DESCRIPTION	SHIP WT.	GENERAL SPECIFICATIONS:
	S105813Y B-5003-1	ONE KEY UNIT	2 LB 7 OZ	STANDARD UNIT HOUSING: CAST BRONZE LOCKING BOLT: SILCONE BRONZE CDA642 INTERNAL PARTS: BRASS, & STAINLESS STEEL FINISH: NATURAL
	S105814Y B-5003-2	TWO KEY UNIT	3 LBS 12 OZ	
	S105815Y B-5003-3	THREE KEY UNIT	5 LBS 0 OZ	
	S105824Y B-5003-1C	ONE KEY UNIT WITH CONTACT MAKER	4 LBS 10 OZ	STAINLESS STEEL UNIT HOUSING: CAST 316 STAINLESS STEEL LOCKING BOLT: STAINLESS STEEL INTERNAL PARTS : BRASS- NICKEL PLATED, & S.S. DUST COVER: STAINLESS STEEL FINISH: NATURAL
	S105825Y B-5003-2C	TWO KEY UNIT WITH CONTACT MAKER	5 LBS 7 OZ	
	S105826Y B-5003-3C	THREE KEY UNIT WITH CONTACT MAKER	6 LBS 10 OZ	
	S105824YMKII B-5003-1CMKII	ONE KEY UNIT WITH TOGGLE SWITCH	6 LBS 8 OZ	CONTACT MAKER ENCLOSURE HOUSING: CAST BRONZE
	S105825YMKII B-5003-2CMKII	TWO KEY UNIT WITH TOGGLE SWITCH	7 LBS 5 OZ	
	S105826YMKII B-5003-3CMKII	THREE KEY UNIT WITH TOGGLE SWITCH	8 LBS 8 OZ	

**AVAILABLE ACCESSORIES**

DUAL	MB5	MB5S	DC2	DC1	DC1M	REVC	RIV
RH	KC	ACYL	SS	AD5	HN	SW3	SW4